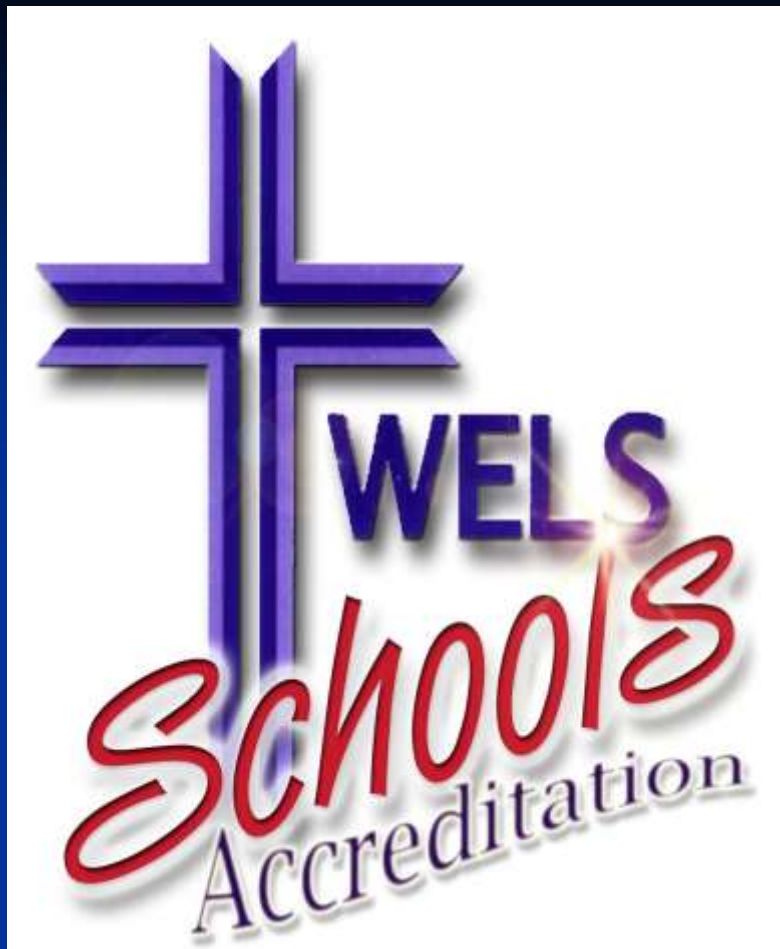


The Little Children and Jesus

Matthew 19:13-15

- 13 Then people brought little children to Jesus for him to place his hands on them and pray for them. But the disciples rebuked them.
- 14 Jesus said, “Let the little children come to me, and do not hinder them, for the kingdom of heaven belongs to such as these.” 15 When he had placed his hands on them, he went on from there.



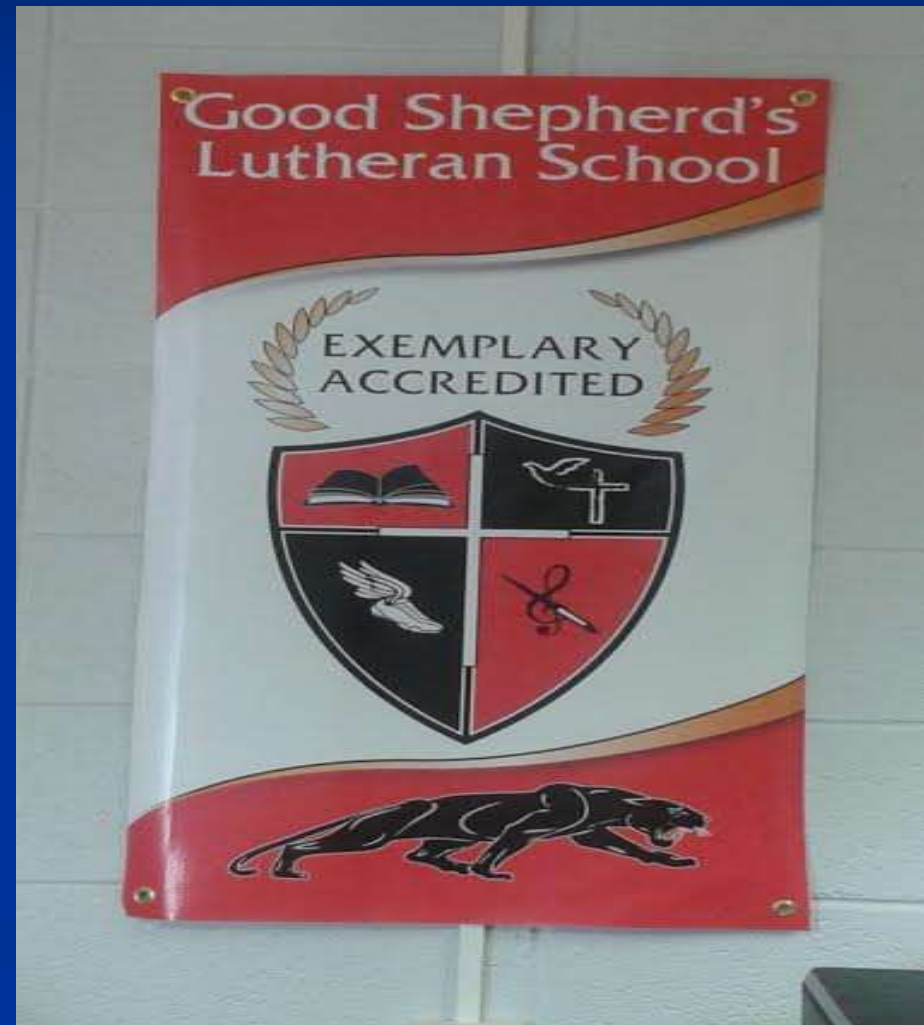


WELSSA Accreditation

Presented to the Good Shepherd's Evangelical Lutheran School CEA Group

1/30/2018

What would you think about a school that called themselves...?



Experience with Accreditation?



Objectives of WELSSA



- Assistance based on Scriptural & Educational principles
- Improvement plan
- Accreditation

Accrediting Agencies

■ WELSSA



- Wisconsin Evangelical Lutheran Synod School Accreditation

■ NCPSPA



- National Council for Private School Accreditation

Let's hear about some of the benefits
from a school that is already
accredited.....

- Trinity, Brillion – WELS Connection Video
(January 2010)
- Link: <https://vimeo.com/8573869>

Uncut interview with Rosie
Bartels, a Catholic Educator from
the Green Bay Diocese, for more of
her observations of our WELS
School System

<http://vimeo.com/8670065>

Process

■ Steps

- Exploration
- Preparation for Candidacy
- Self-Study
- Validation
- Decision
- School Improvement Plan





Conducting the Self-Study

Role of School Administration

- Submit application and order information
- Study benefits and process
- Request consultant (if applicable)
- Present to faculty and School Board
- Support work of steering/sub-committees
- Serve on committees



Conducting the Self-Study



Role of Board of Education

- Learn about WELSSA and decide course of action
- Seek approval/support from Church Council and voters
- Verbally support work of steering and sub-committees
- Members may serve on committees





Conducting the Self-Study

Role of Steering Committee

- Appoint subcommittee members
- Establish a schedule of the process
- Oversee subcommittee work
- Review subcommittee findings and evidence collection
- Assemble final written report



Conducting the Self-Study



Role of Subcommittees

- Evaluator
- Collector and organizer
- Identifier
- Submitter



Conducting the Self-Study



Role of Teachers

- Serve on subcommittee
- Resource people
- Encourage

Warning!

Teachers serve as resource people, not the ones that complete the self-study



Benefits for Good Shepherd's

- Helps us recognize and maintain the multitude of blessings received from God
- Helps us identify areas which need work so that the school can better serve the Lord, Good Shepherd's, and the community
- Involves a large number of people who are interested in Good Shepherd's to increase their knowledge and understanding of the school. (Many lay members & the faculty serving on the subcommittees. Numerous others will be contacted by the subcommittees for input.)



More Benefits for Good Shepherd's

- **Credibility (Quality Counts but Accreditation Shouts!!!)**
- **Accountability**
- **Publicity**
- **Structured Improvement**
- **Third-Source Funding**



Fifteen Self-Study Standards

- 1. The School's Mission and Its Implementation
(10 items)
- 2. The School & Its Relationship with the Congregation
(10 items)
- 3. The School and Its Relationship with the Home
(13 items)
- 4. The School and Its Relationship with the Students
(12 items)
- 5. The School and Its Relationship with the Community
(9 items)

Fifteen Self-Study Standards

- 6. The School and Its Relationship with the WELS
(5 items)
- 7. The School's Plans for Enrolling Students
(6 items)
- 8. School Climate
(9 items)
- 9. School Governance and Administration
(49 items)
- 10. Professional Personnel (faculty and support staff)
(17 items)

Fifteen Self-Study Standards

- 11. Curriculum
(17 items)
- 12. Instruction
(33 items)
- 13. Student Services
(30 items)
- 14. Physical Facilities
(10 items)
- 15. Information Management
(13 items)

243 items/questions in all

Some Suggestions for WELSSA Subcommittees

No. Five: Standard 9 – School Governance and Administration

- Board of education chairman
- A public school administrator who is a member of the congregation
- The school secretary

No. Six: Standard 10 – Professional Personnel (Faculty and support Staff) and Standard 13 – Student Services

- A parent (non-member) of a school student

No. Seven: Standard 11 – Curriculum and Standard 12 – Instruction

- Board of education member
- Public school teacher who is a member of the congregation
- A former student of the school who is now either a junior/senior in high school or in college

No. Eight: Standard 14 – Physical Facilities and Standard 15 – Information Management

- Congregation member who heads or manages a business
- Possibly a member college student who is studying information management.
- Property coordinator

What is the Self-Study Like?

STANDARD 6 - The School's Relationship with the Wisconsin Evangelical Lutheran Synod

Maintaining a solid relationship with the Wisconsin Evangelical Lutheran Synod benefits both the school and the synod.

6.1 * The school is operated by one or more congregations in fellowship with the Wisconsin Evangelical Lutheran Synod, or by a group that is in fellowship with WELS.

Fully Met

Partially Met

Not Met

Evidence: Documentation?

6.2 * The faculty knows, understands, and is committed to the theology and mission of the WELS.

Fully Met

Partially Met

Not Met

Evidence: Documentation?

Levels of Accreditation

- 85% of the 250 items to be considered accredited
- 95% of the 250 items to be given “Exemplary” accreditation status
- 100% of the “KILLER standards” marked with a “*” have to be met or else “Provisionary” is the best possible

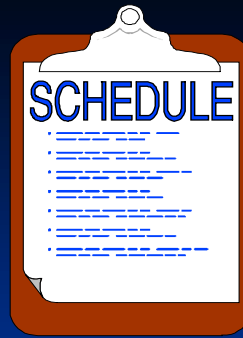


What is the Cost?

- Application Fee— \$200
- Paper Documents and Office Fees - \$100
- All expenses for visiting team's service to the school related to their on-site visit—approximately \$1500(substitute teachers, lodging, travel, & meals)
- Stipend/honorarium for site team members - \$600
- Annual fee for maintaining accredited status—\$300
- Time

Good Shepherd's WELSSA Timeline??

Can be adjusted...just something to consider



- January 2018 – March 2018 - Secure WELSSA sub-committee members (Get many involved)
- April 2018 to December 2018 – Begin/continue Self Study
- January 2019 - Steering Committee finalizes Self Study Document
- January 2019 – February 2019– Gather documentation and put together binders (or electronic files) of self study and documentation for the site team
- March 2019 or April 2019 – Visitation team on site

Visitation Team

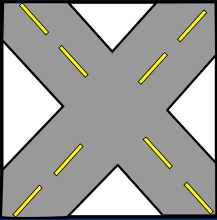
4-6 team members (probably 4) –

- 1. WELS school administrator
- 2. WELS teacher
- 3. Non-WELS Christian administrator or teacher
- 4. WELS Pastor *
- 5. WELS college professor or WELS Synod Administrator
- 6. Visitation Captain – WELS teacher trained in self-study process



Purpose of Visitation Team

- Assist in improving your total school program
- Validate the information in the self-study
- Recommend accreditation level



Follow Up from Site Team's Visit



- Visitation Team Report
- Prioritize recommendations
- School Improvement Plan
- Annual Accreditation Report
- Every 5 years – Do it again

For more information on WELSSA go to...

- <https://cls.welsrc.net/download-cls/welssa/>



Good Shepherd's
Lutheran School –

West Allis,
Wisconsin

Questions?

What's it going to take?

- Focus on HIM, HIS mission, and our mission.
- Desire to most effectively meet our mission.
- Investment with:
 - Time
 - Money
 - Effort



Why improve?





Conclusion

Why we do it....

Mission Statement

Compelled by Christ's love, guided by the Great Commission, and rooted in God's Word; Good Shepherd's Lutheran School exists to serve the families of our congregation and community by training young minds for life, and preparing young hearts for eternity.



Proverbs 22:6 - Train up a child in the way he should go, and when he is old he will not turn from it.

Matthew 19:14 - Jesus said, "Let the little children come to me, and do not hinder them, for the kingdom of heaven belongs to such as these."

Accreditation will most effectively help us to meet our mission and help us continue to raise the bar.

